

# When you use wire rod that looks like this...

Don't worry you can still make bright finish, high quality wire when a WILCO Mechanical Descaling System with Automatic Rod Brushing is used for rod prep. The aggressive cleaning action of 8 steel wire brushes will scour the rod surface and remove adherent scale along with red rust. With the

WILCO system there is no need for operators to manually adjust brushes to account for wear. Sophisticated PLC based controls constantly monitor the machine's operating condition and automatically adjust brush pressure leading to the production of consistently cleaned wire rod.



Some features unique to the WILCO Brusher...

90° Brush orientation for improved lubricant pickup and long brush life.

**Automatic brush pressure control.**

Standard wire brush is available locally.

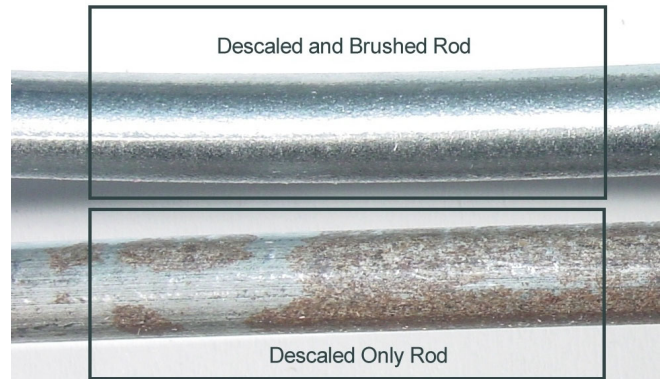
Compact systems –

M1250 69" OAL

M1750 92" OAL.

Two models of WILCO Systems incorporate aggressive Automatic Rod Brushing into the mechanical descaling process. The Model 1750 (shown below) builds on the Model 1250 by applying a lubricant precoat to the rod surface to improve both product quality and drawing machine performance. Commercially available lubricant precoat is applied in liquid state heated to 185° F then immediately dried on the fly using our tungsten carbide air wipe.

For additional details about a WILCO Automatic Brush Descaling System, any of our 5 standard descaler models or a first-hand system demonstration, contact Wire Lab Company.



## Wire Lab Company

15300 Industrial Parkway  
Cleveland, OH 44135

Ph. 216)362-0800

Fx. 216)433-0007

email. [info@wirelab.com](mailto:info@wirelab.com)